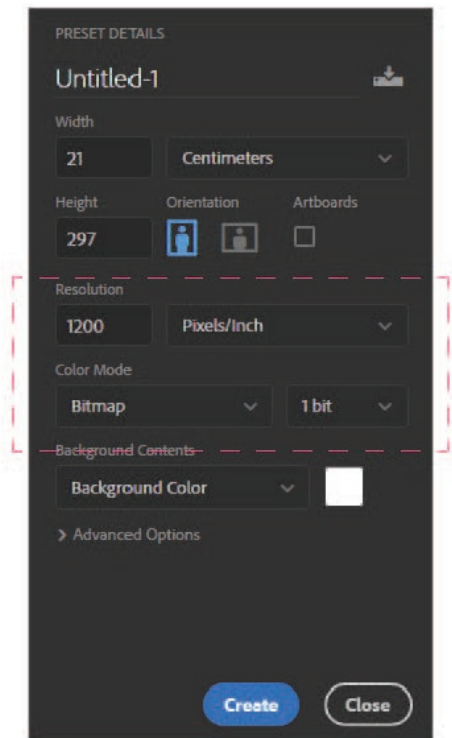


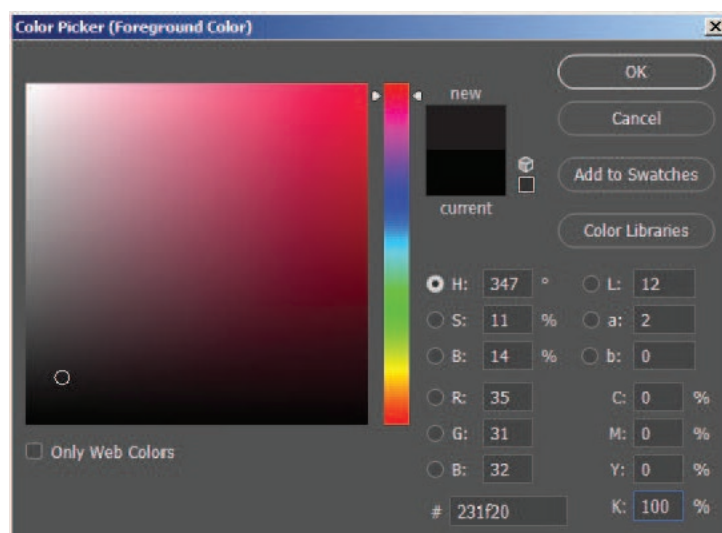
a guide to preparing artwork in Adobe Photoshop

When starting a new project in photo-shop, make sure your new document has the following settings. The page size is not essential, you can set that as required the highlighted areas are the important bits!



Make sure any type you set is in 100% black only.

Any type you now set will be smooth and crisp for etching.

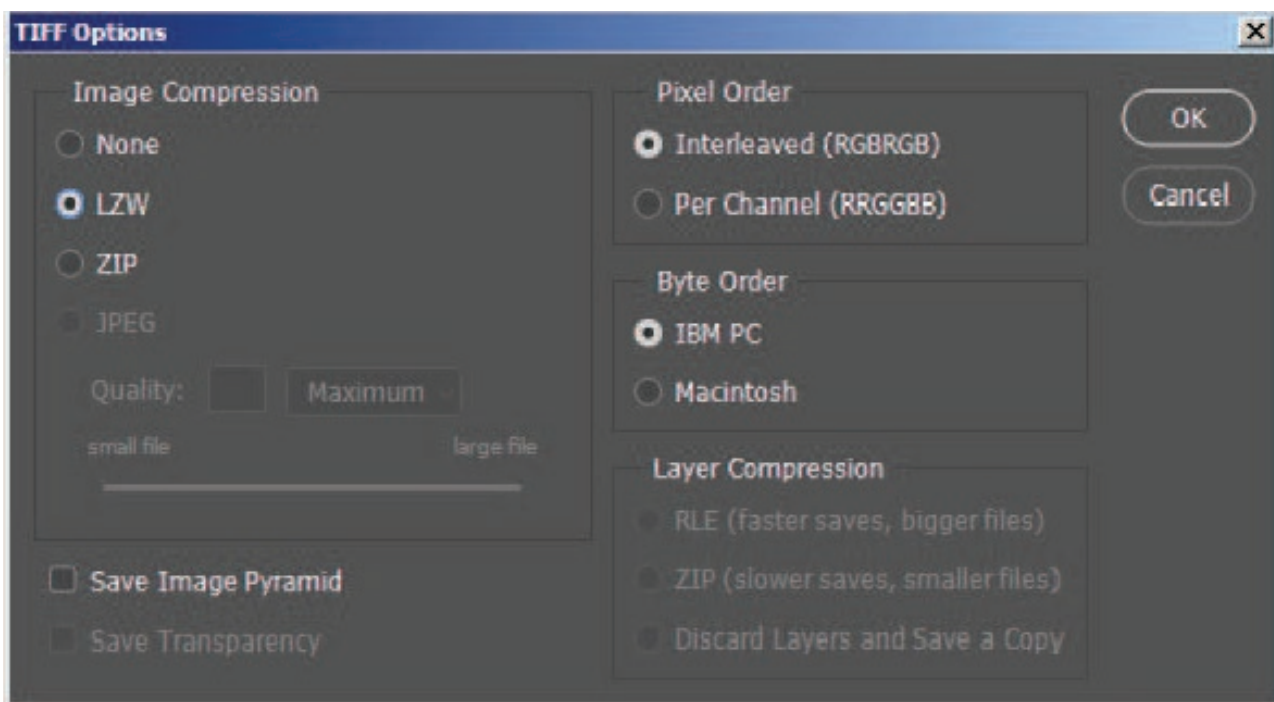


artwork in Adobe Photoshop

NEVER flatten the image. Typing in Photoshop creates a type layer, which maintains the vectors of the type. These are what create the clean edges of type. If you rasterize the layer, flatten or merge it down, that type layer goes away and you will be left with a bitmap image that is resolution-dependent.

We suggest saving as a tiff with the settings below applied -

TIFF SETTINGS



artwork in Adobe Photoshop

WORKING WITH IMAGES



Any images from the internet are normally 72 dpi saving these into a 1200 dpi document does not change the appearance in fact it makes them look a lot worse!



Images may look good when they are small on a computer screen but when you zoom into them you can easily spot the difference

We always recommended printing images out on a laser printer if possible.
Many images that look good on screen when printed out tell another story!

TIP - if you are scanning images to import and work on always scan images at 1200 dpi bitmap, it may be slow but images will be closer to original.

Scanned images should be saved in the TIFF format with settings as page 2.